



Hölscher Leuchten GmbH
Haferbachstraße 9-15
32791 Lage Germany

Item no.: 005 980/005 960/005 880/005 860

Thank you for purchasing our product. This manual will provide instructions for effective and safe use of the product. Please read it carefully before use and store the manual in a safe place for future reference. If you ever pass the product on to others, this manual should be included.

1. Package content

- LED mirror
- Screws
- Manual

2. Safety instructions

For intended use as described in this manual only.

Before use, inspect the device and its parts. Do not use in case of damage.

Do not place, store or use the product near water.

Do not attempt to repair, disassemble or alter the product yourself.

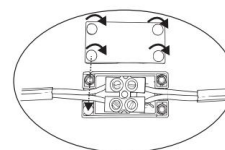
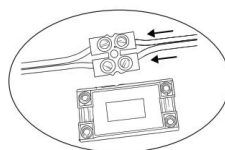
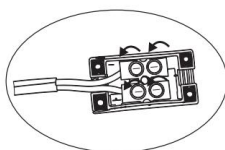
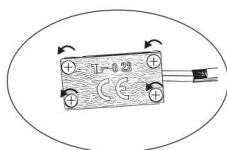
Do not immerse in water.

Do not immerse in fire.

Children under 16 years old should use this product under adult supervision.

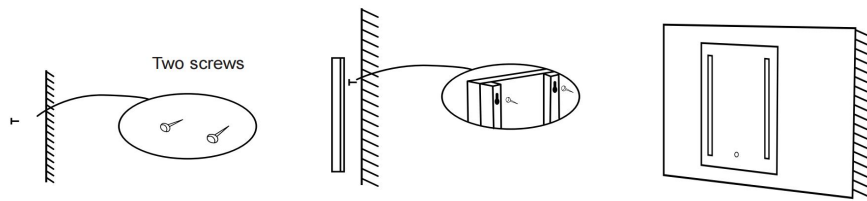
3. Operation

SETTING UP A CIRCUIT WITH YOUR WIRES



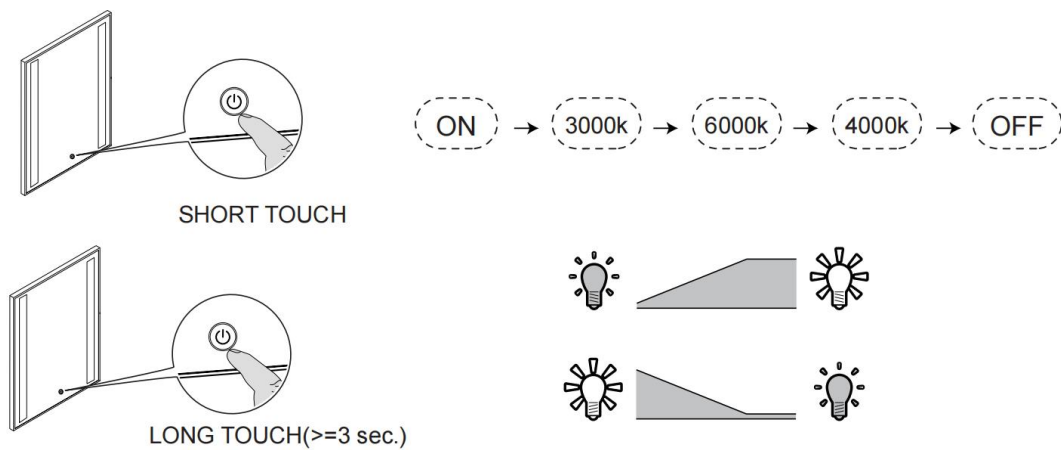
1. Unscrew the cover of the wire box.
2. Loosen the two screws which are used to connect the two cables.
3. Connect the cables and tighten the screws again.
4. Close the wire box with the four screws.

HANG UP THE MIRROR



1. Attach the mirror to the wall with screws.
2. Use the screws to hang the mirror on the wall.

USE



Step 1: After connected with power, button light is on.

Step 2: Short touch the switch button to turn on LED light to color temperature as this sequence: warm light-white light-warm light(3000k-6000k-4000k), short touch again to turn off the LED light.

Step 3: During process of step 2, long touch the switch button to adjust LED light brightness.

Step 4: When LED light off, long touch the switch button to turn off button light, short touch again to turn on button light.