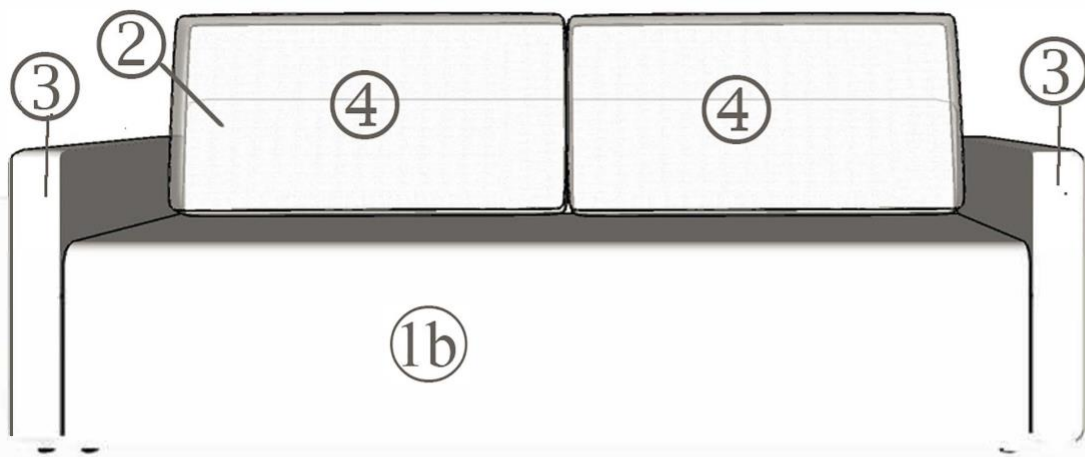


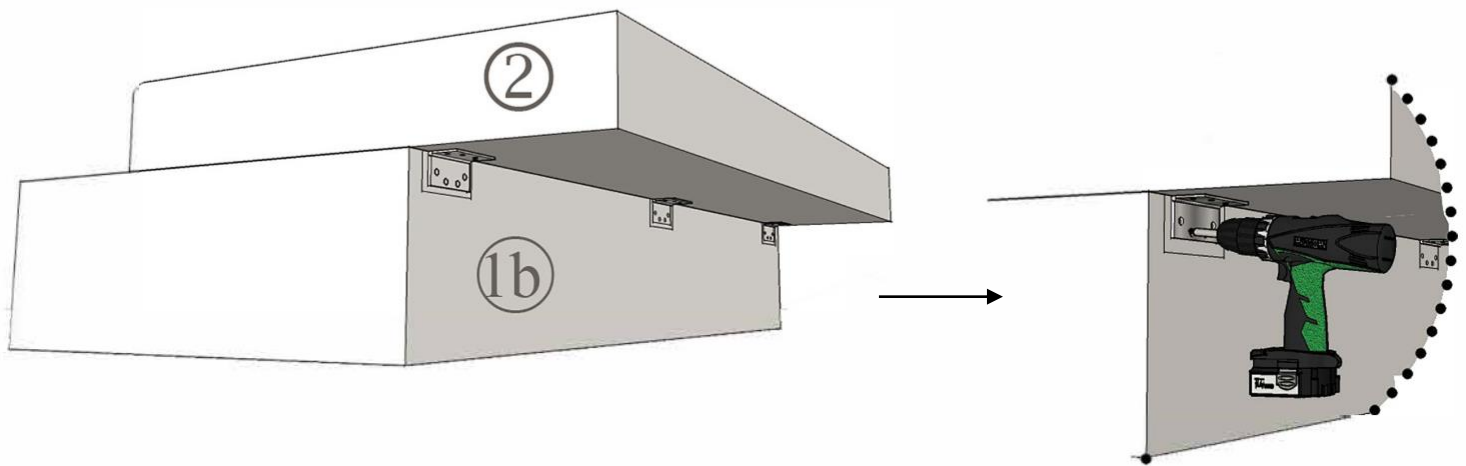
Assembly instruction - Stila sofa/Bed



- 1a. Seat
- 1 b. Bed linen box
- 2. Backrest
- 3. Armrest x 2
- 4. Large pillow x 2

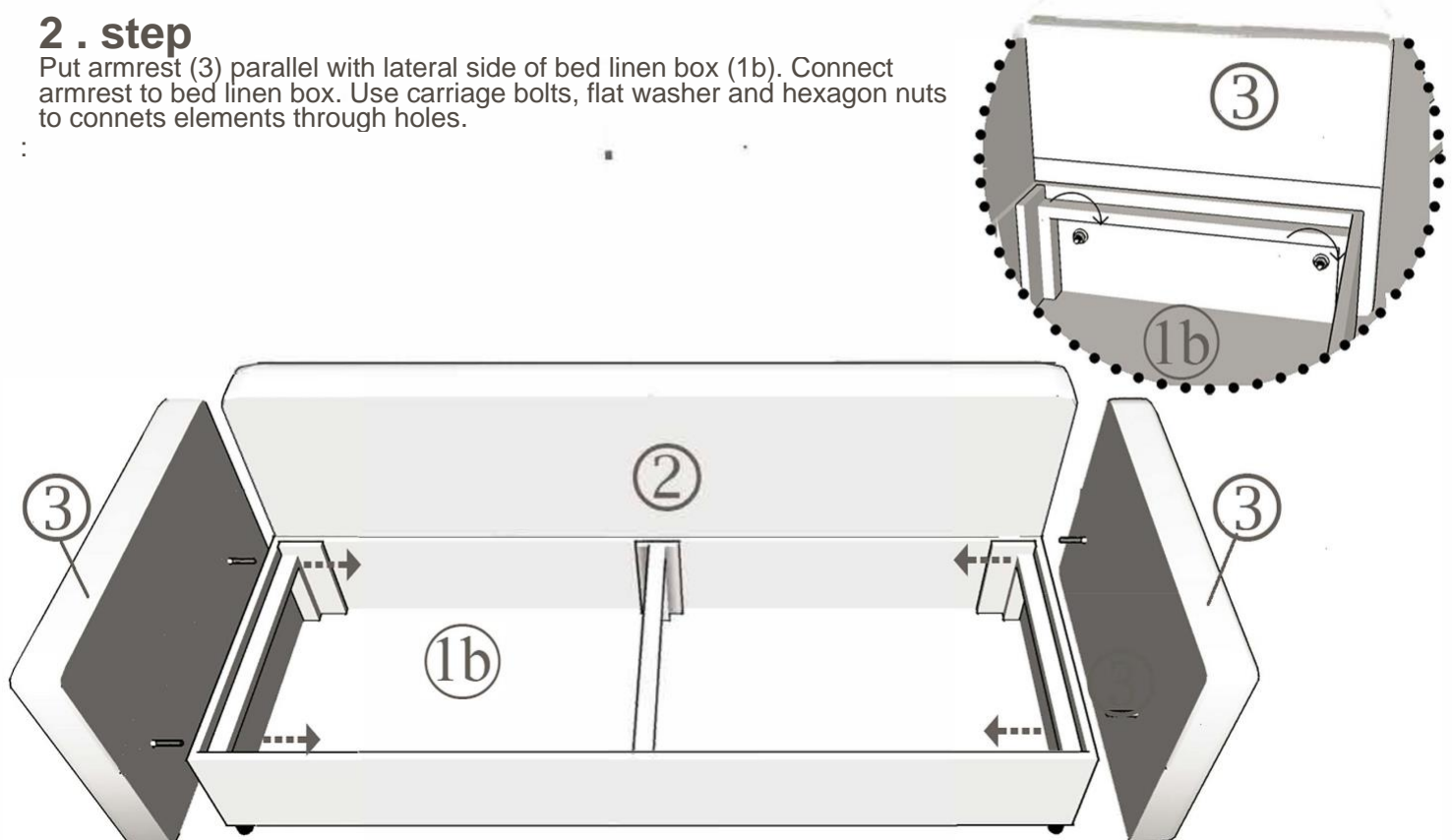
1 . step

Put backrest (2) horizontally over bed linen box (1b). Position hinges in place where labels are connect backrest and bed linen box by screwing through the holes hinges.



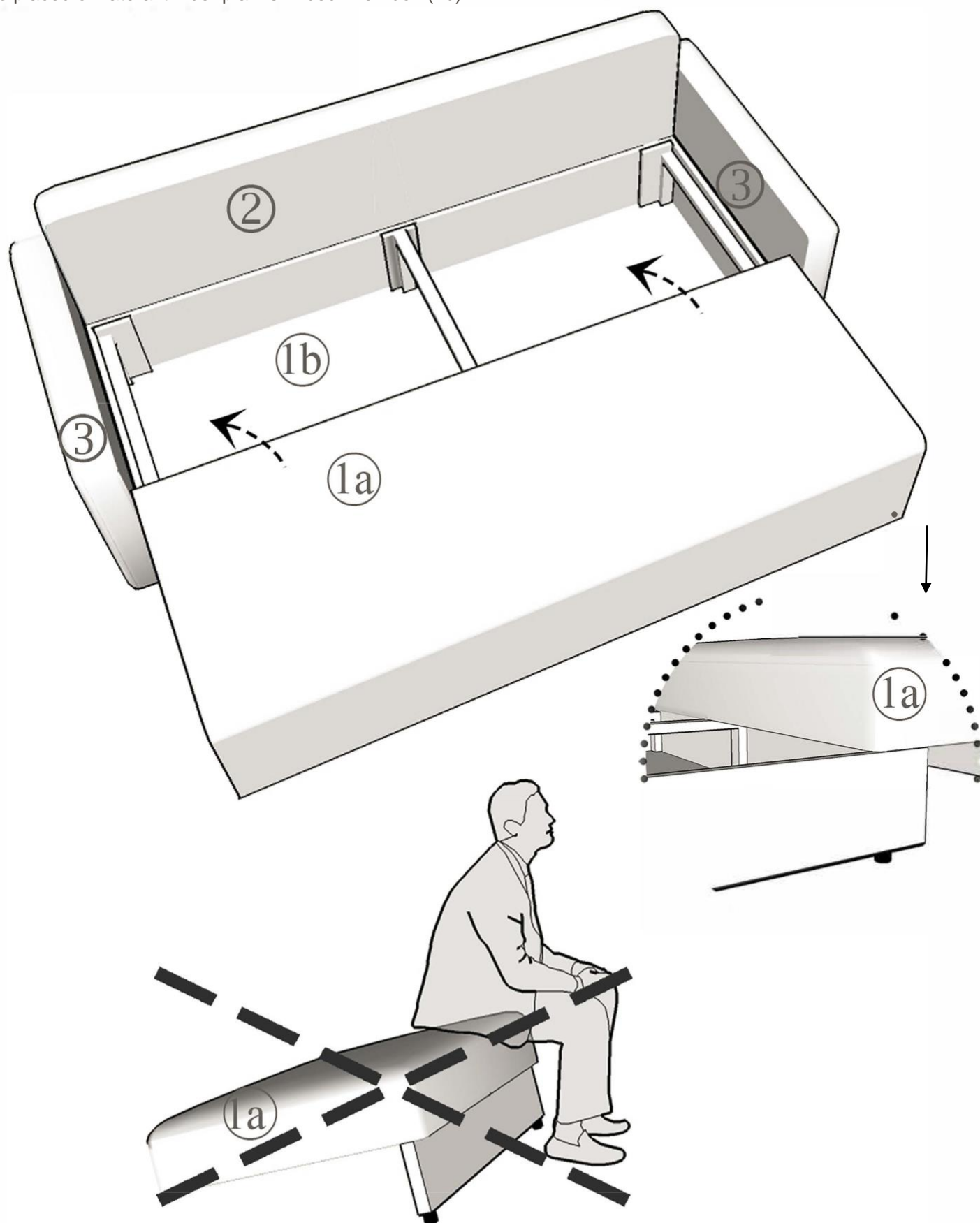
2 . step

Put armrest (3) parallel with lateral side of bed linen box (1b). Connect armrest to bed linen box. Use carriage bolts, flat washer and hexagon nuts to connects elements through holes.



3 . step

Put backrest in vertical position and put seat (1a) over bed linen box. Plastic legs on bottom of the seat should be placed on lateral timber planks in bed linen box (1b).



Warning !!!

Do not seat or put any pressure on sitting element while it's not positioned on bed linen box .