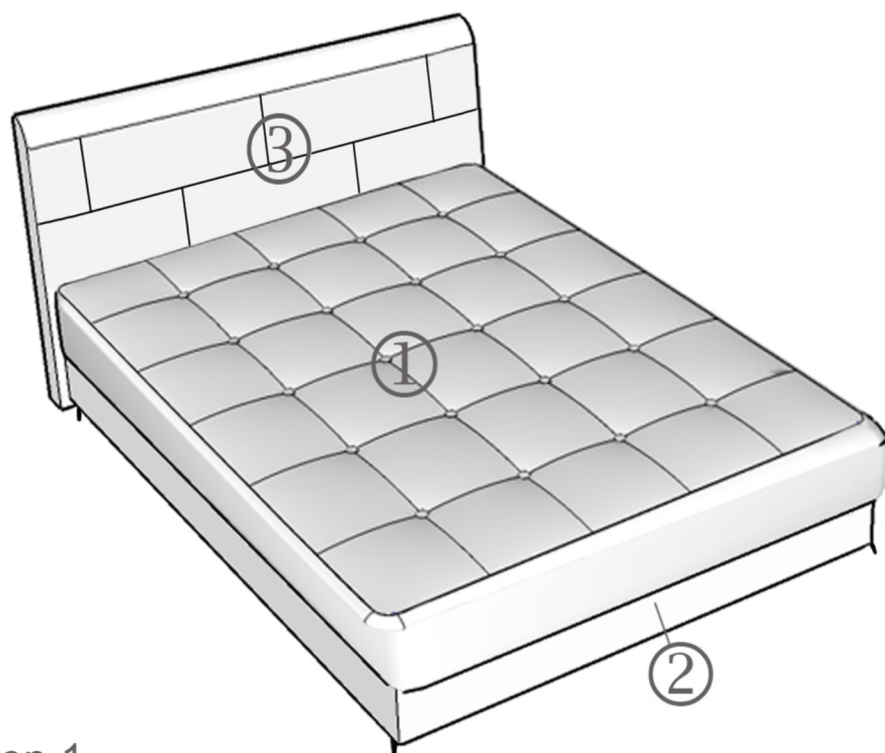


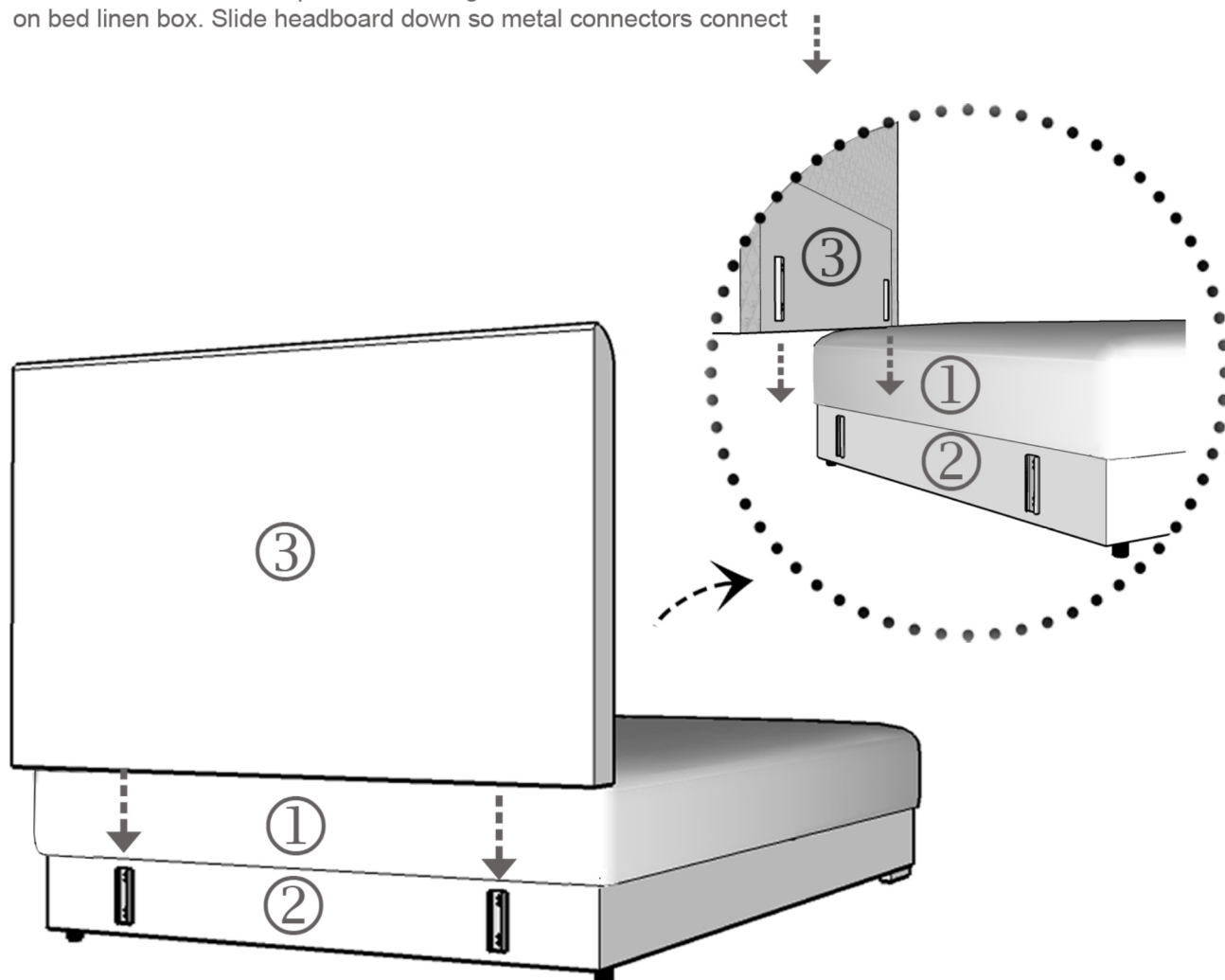
Assembly instruction - Double bed Luka



- 1. Mattress
- 2. Bed linen box
- 3. Headboard

Step 1.

Put headboard in vertical position and align metal connectors on headboard in line with metal connectors on bed linen box. Slide headboard down so metal connectors connect



Step 2.

Put bed linen box 2 with it's floor up. Position four plastic legs in corners where holes are. Use pressure to connect plastic legs with floor.

Position two plastic legs in the middle of the box, where on the other side wooden beams are positioned inside the box. Connect legs with floor.using screws.

When the legs are mounted, turn the box so that it stands on legs.

