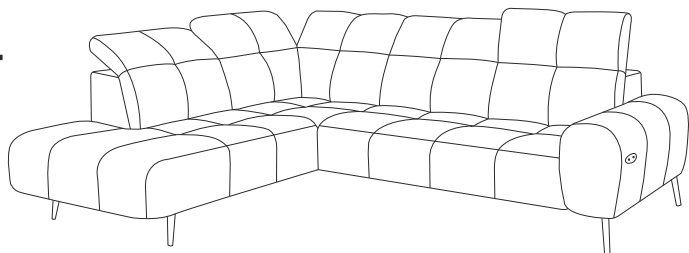




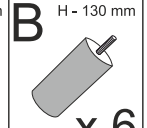
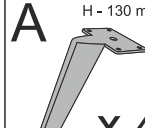
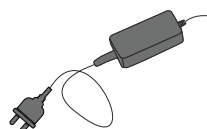
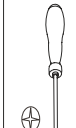
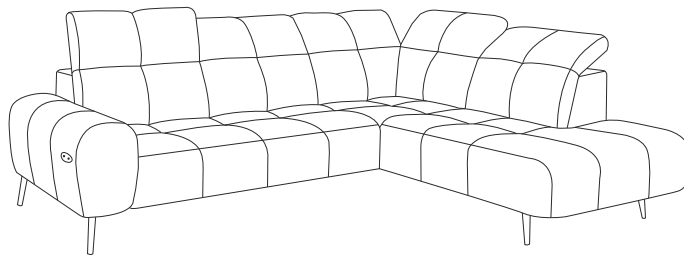
The symbol of the crossed-out dustbin indicates that this electrical or electronic equipment must not be disposed of with household waste at the end of its life, but must be taken for separate collection by the end user. Free collection points for waste electrical and electronic equipment are available in your area, as well as other collection points for the reuse of the equipment. You can obtain the addresses from your city or local government.

SILVIO L

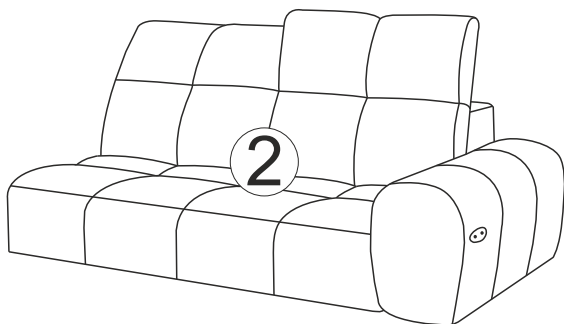
L



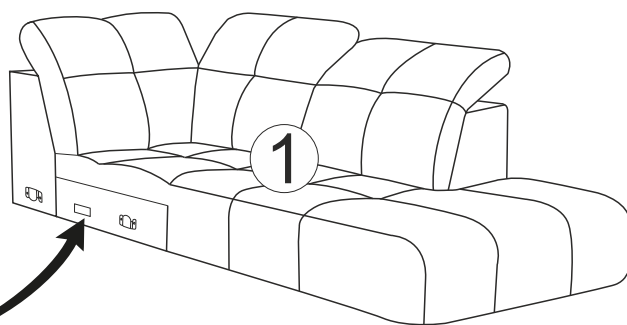
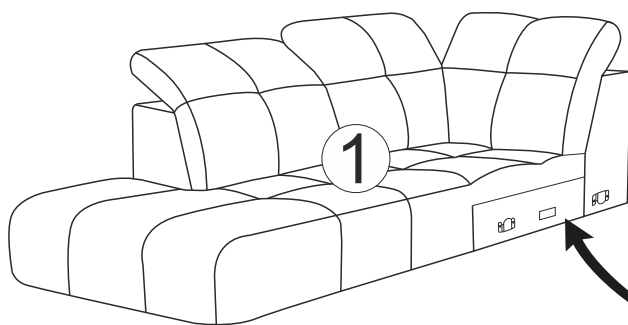
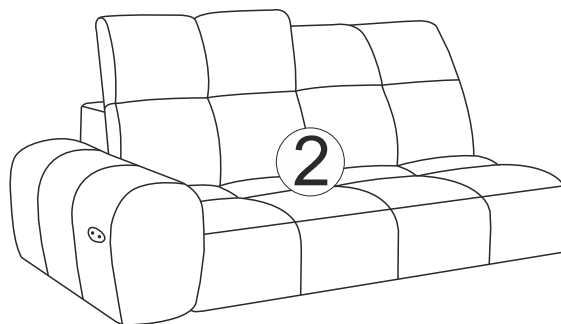
R



L



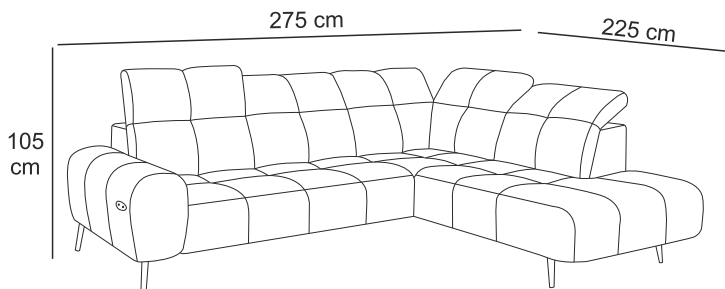
R



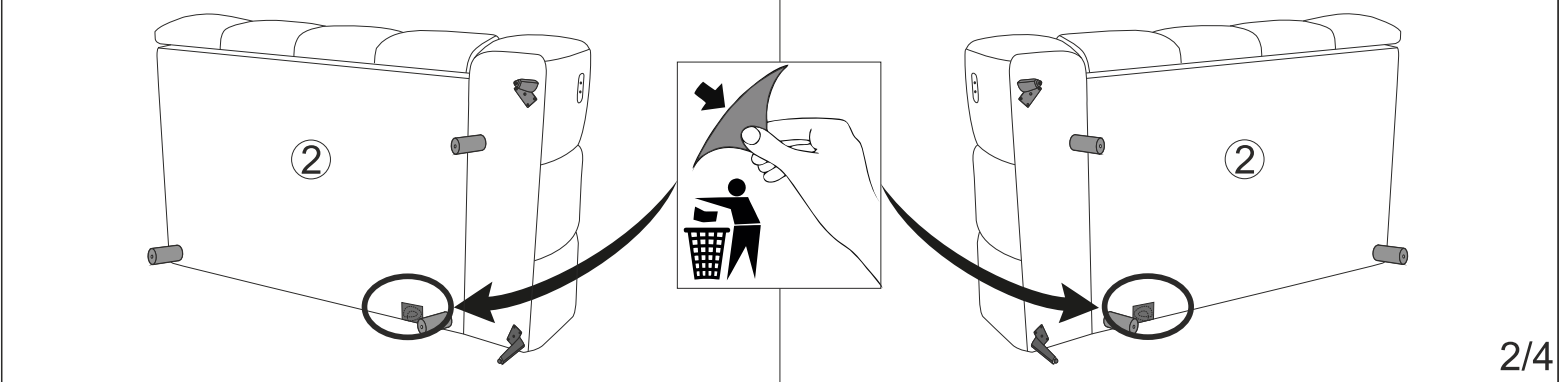
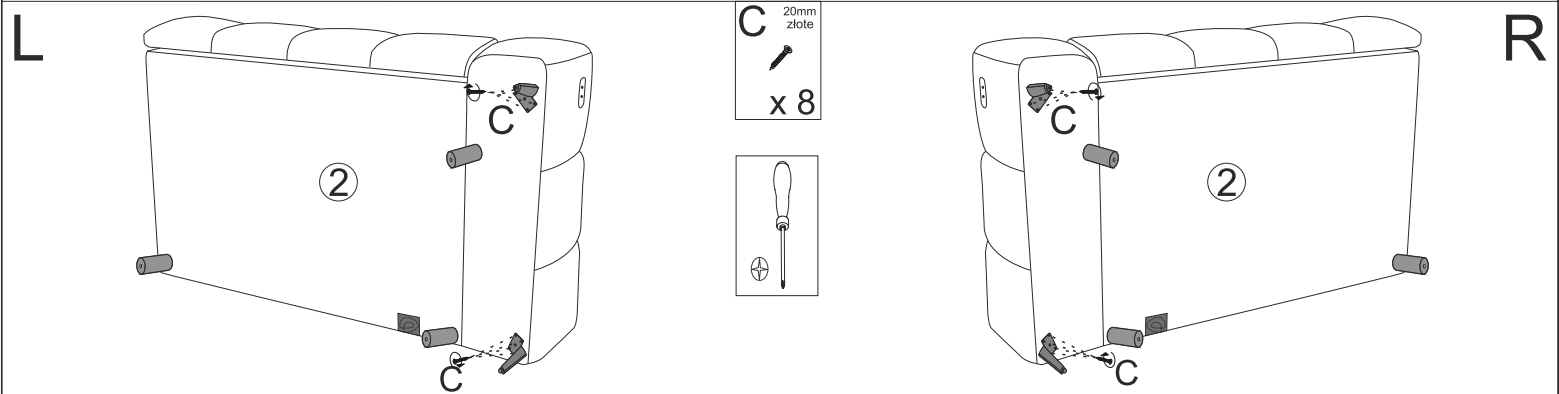
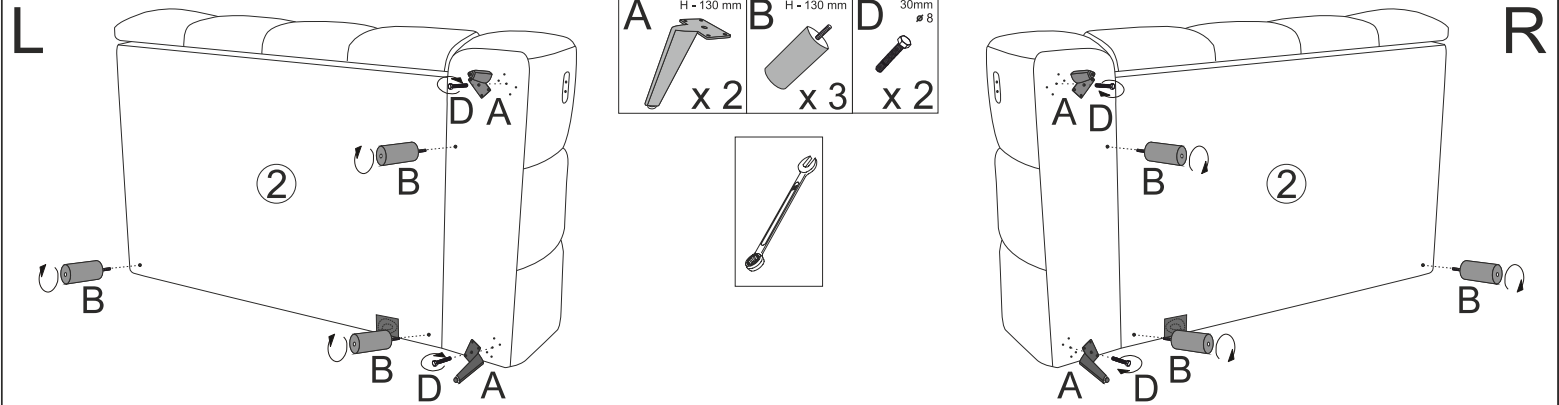
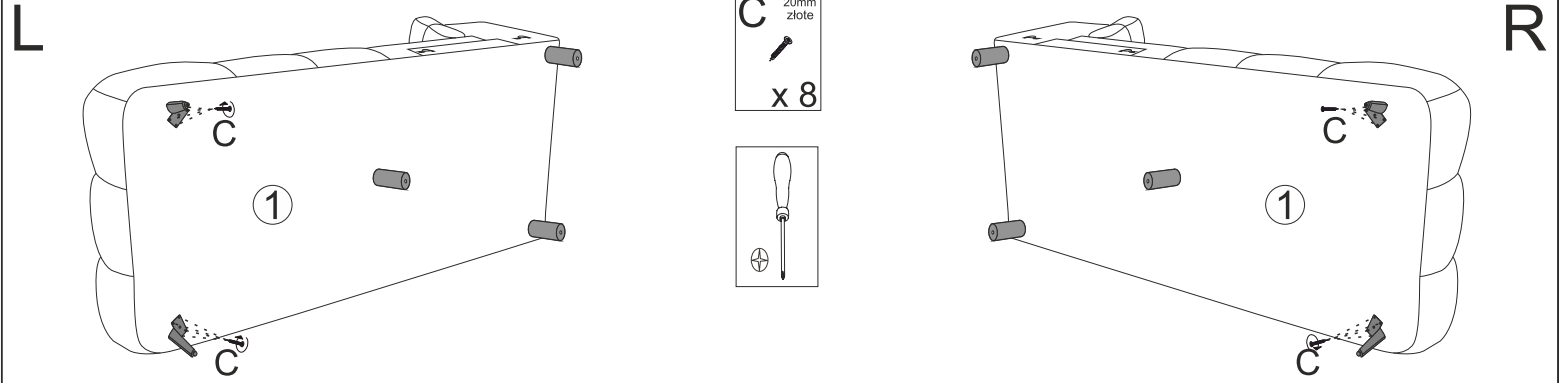
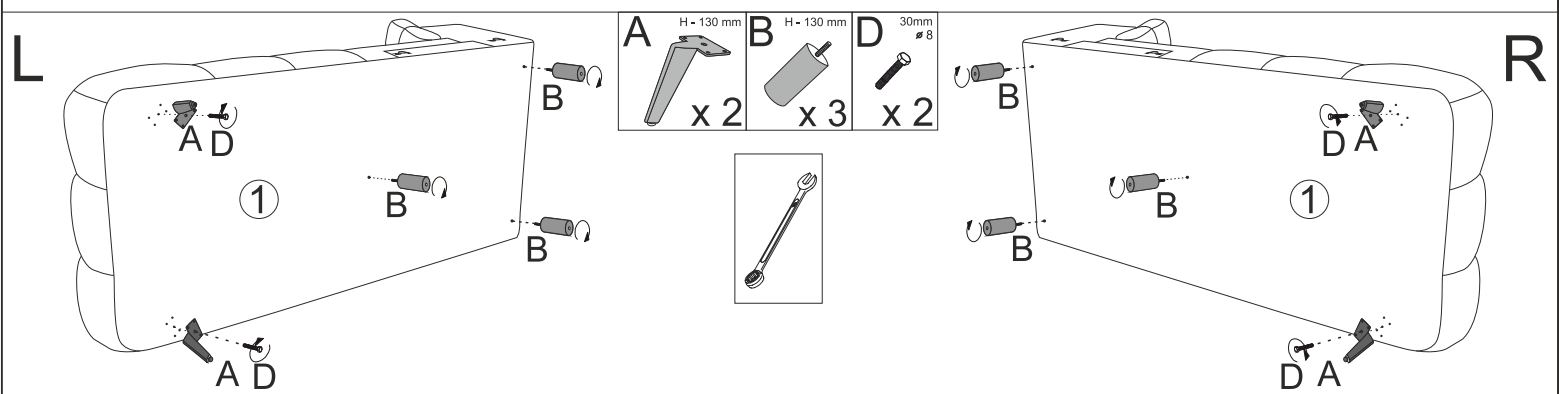
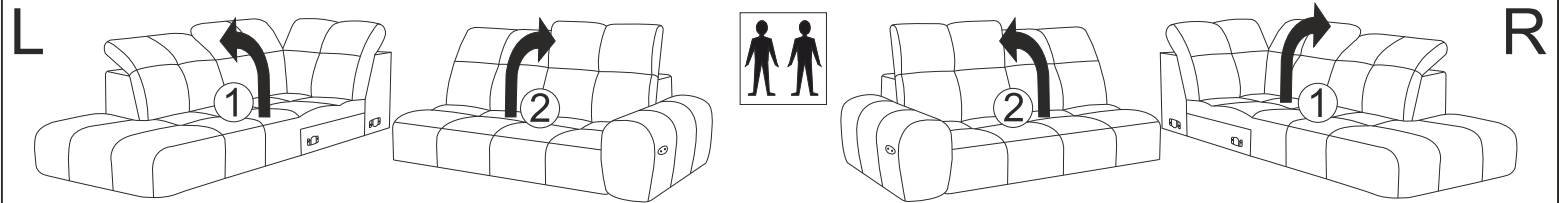
Sofa with electric mechanism
Modell: SILVIO L WOHNLANDSCHAFT

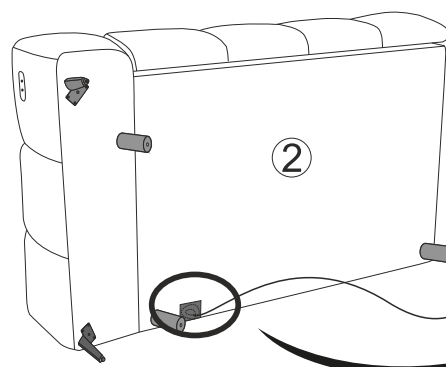
Output: max 116W
Input: AC/DC 100-240 V 50/60 Hz
only with a dedicated power supply

Producent:
Fabryka Mebli Mars Sp. z o.o.
ul. Namysłowska 9b, 63-640 Bralin
export2@marsfurniture.pl
Made in Poland



				PCS	
①	220	105	75	x 1	2/2
②	170	105	75	x 1	1/2

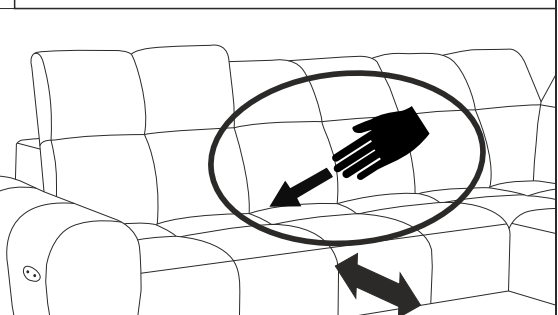
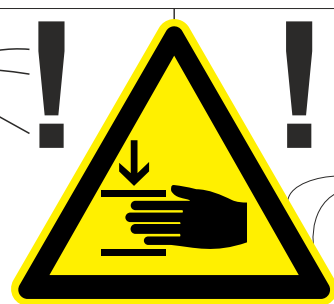
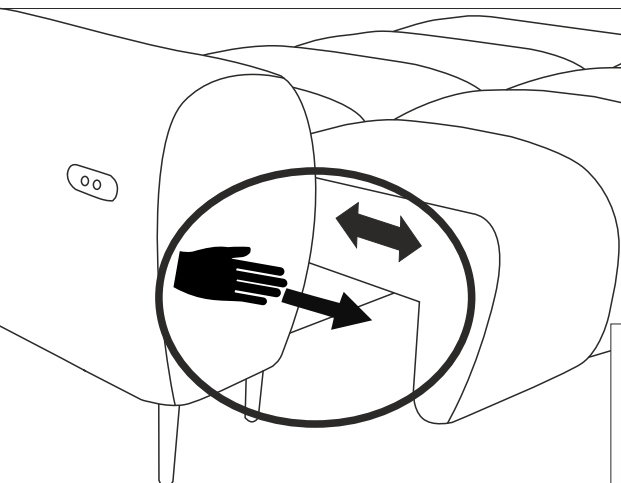
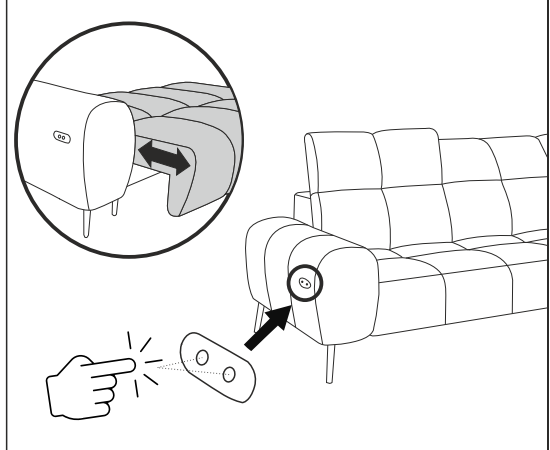
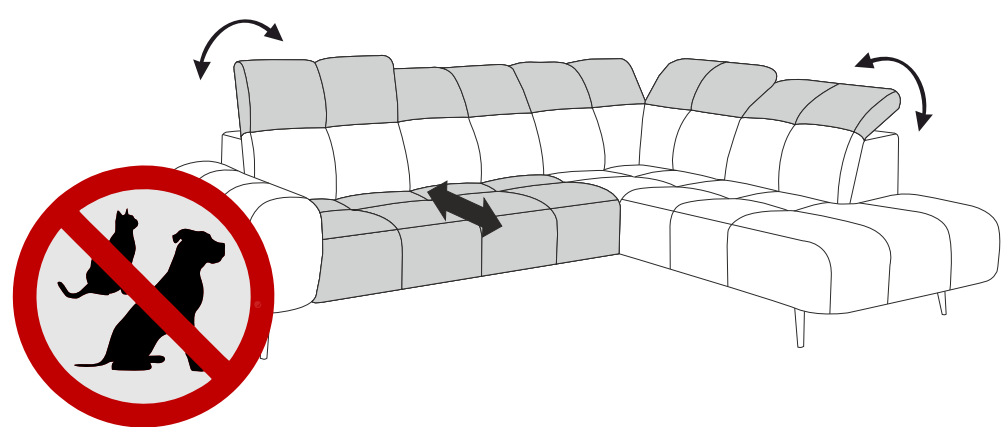
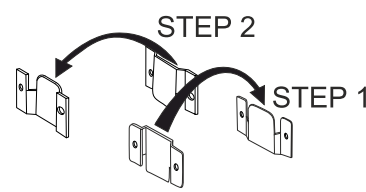
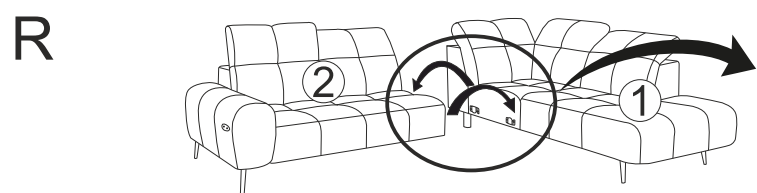
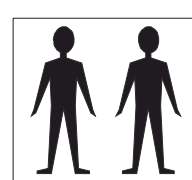
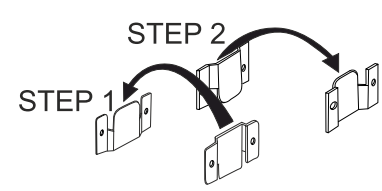
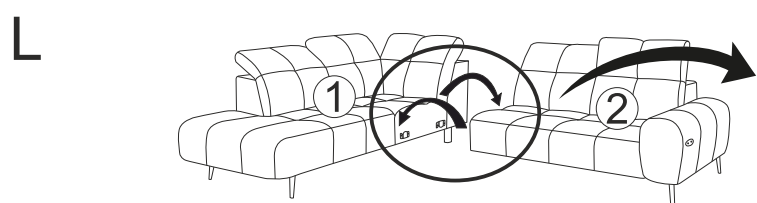
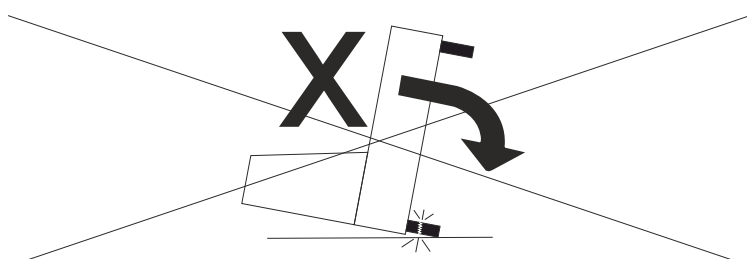
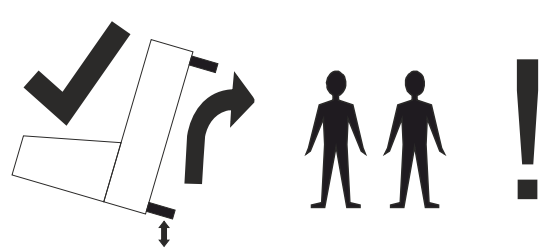




AC/DC ADAPTER
 Model No: KDDY008H
 Input : 100-240V~ 50/60Hz 2.4A
 Output :29.0V === 2.0A 58.0W;
 29.0V === 4.0A Max 116.0W;
 Duty Cycle: Max10%:2min ON/18min OFF

Caution: risk of electric shock; Dry location use only!

Protection class: II
 Degree of protection Ip20
 Duty type: 2 min ON and 18 min OFF



UWAGA: NIEBEZPIECZEŃSTWO PRZYTRZAŚNIĘCIA
 Podczas regulacji siedziska istnieje ryzyko przytrzaśnięcia.
 Nie wkładać rąk ani palców w strefę ruchu między siedziskiem a oparciem.
WARNING: RISK OF PINCHING
 During seat adjustment, there is a risk of pinching.
 Keep hands and fingers away from the moving area between the seat and the backrest.

